

CIRCUIT: SPST  
CONTACT CONFIGURATION  
45° INDEXING

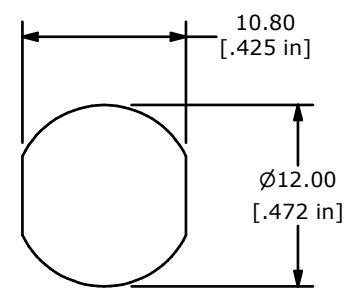
SWITCH FUNCTION		
POS 1	POS 2	POS 3
1-2	OFF	3-4

LEGEND

- = INDICATES KEY PULL POSSIBLE
- = DETENT POSITION

NOTES:

1. ALL DIMENSIONS IN MM[INCH]
2. GENERAL TOLERANCE: x.x= ± 0.4  
x.xx= ± 0.25
3. TERM. NOS. FOR REFERENCE ONLY.
4. RATING: 1A @125VAC, 0.5A @250VAC
5. CONTACT RESISTANCE: 10milli-OHMS
6. DIELECTRIC STRENGTH: 1000 VAC-1Minute
- ▲7. MATERIALS:  
HOUSING: ZINC ALLOY W/CHROME PLATING  
CYLINDER: ZINC ALLOY W/CHROME PLATING  
TERMINAL AND CONTACTS: SILVER PLATED  
KEYS (2) KEY CODE 1506: ZINC ALLOY, CHROME PLATING
- 8.▲ DENOTES CRITICAL PARAMETER.
9. 2002/95/EC (ROHS) COMPLIANT



RECOMENDED PANEL CUTOUT

C	19220	PART CHANGED FROM HT (HIGH TEMP)	7/23/10	BLR
B	19167	TITLE and RESIN CHANGE	6/28/10	BLR
A	17689	RELEASED FOR PRODUCTION	9/19/07	RC
REV	PCR NO	DESCRIPTION	DATE	BY

THE INFORMATION CONTAINED IN THIS DOCUMENT IS PROPRIETARY TO E-SWITCH AND IS NOT TO BE COPIED OR TRANSFERRED

TITLE KO132D1506

SCALE	2=1	DATE	7/23/2010	DR	RC	DWG	K400121	REV	C
-------	-----	------	-----------	----	----	-----	---------	-----	---